



PLYMOUTH MARKETPLACE PLYMOUTH, MN

Suntide Commercial
Realty, Inc.
2550
University Ave W
Suite 416 S
St. Paul, MN 55114
www.suntide.com

F
O
R

L
E
A
S
E

CONTACT

Nancy Murdakes
Brown
651.209.9622
nancy@suntide.com

-or-

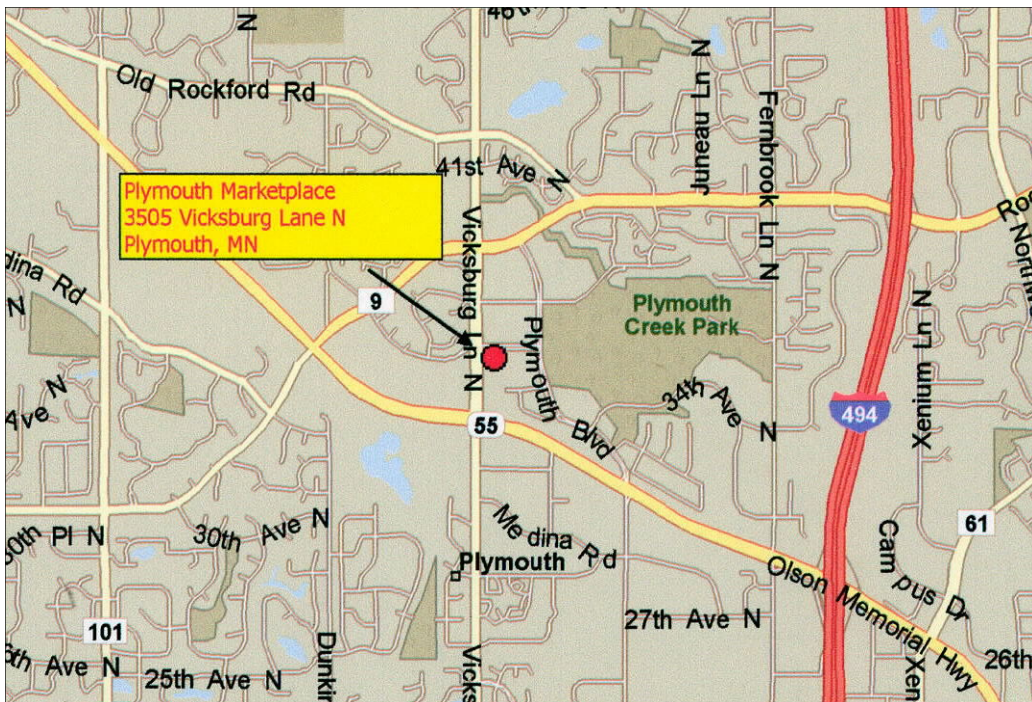
Derrick Jensen
651.209.9614
derrick@suntide.com



Plymouth Marketplace is located in a rapidly-growing community along Highway 55 and Vicksburg Lane.

This gorgeous retail property is anchored by Lund's, Old Chicago Pizza, and Buffalo Wild Wings. It's also visible from Highway 55 and accessible from a controlled intersection on Vicksburg Lane.

This well-heeled project neighbors a variety of entertainment venues including a new Mann Theater, and several excellent restaurants such as: Noodles & Co, Chipotle, and Quizno's Subs.





PLYMOUTH MARKETPLACE

PLYMOUTH, MN

Location	3505 Vicksburg Lane North, Plymouth, MN 55447 (Hennepin County)
Project Size	85,541 sf
Available	1,116 sf
Usage Type	Retail or Service
Lease Rate	\$20.00-\$24.00 psf, NNN
2010 Taxes	\$7.05 psf, estimated
2010 CAM	\$4.54 psf, estimated
Total Operating	\$11.59 psf, estimated

Demographics (2009)

	<u>1 Mile</u>	<u>3 Mile</u>	<u>5 Mile</u>
Population	8,351	51,742	121,797
Households	3,432	19,056	47,614
Avg. HH Income	\$122,072	\$145,779	\$131,600

Traffic Counts (2007)

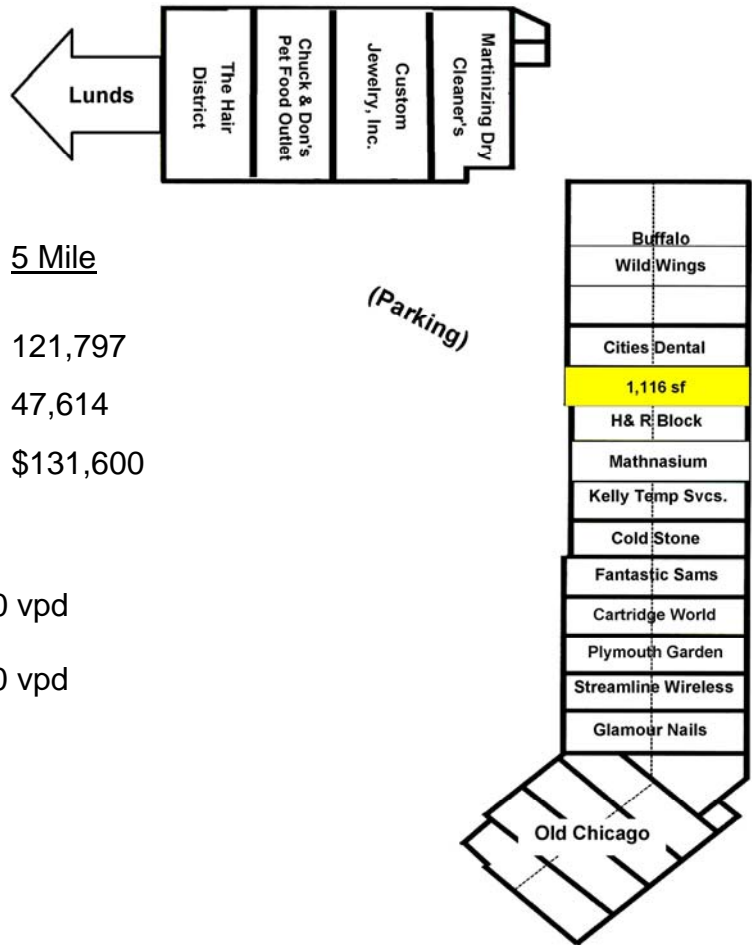
Along Hwy 55: 38,000 vpd
 Vicksburg Lane: 16,400 vpd

Contact

Nancy Murdakes Brown
 651.209.9622
nancy@suntide.com
 -or-
 Derrick Jensen
 651.209.9614
derrick@suntide.com

Website

www.suntide.com



The information contained herein was obtained from sources believed to be reliable, but Suntide Commercial Realty, Inc has not verified nor has any knowledge regarding the accuracy or completeness of information and makes no representation or warranty concerning the same. Therefore, Suntide Commercial Realty, Inc disclaims all liabilities in connection with any inaccuracies or incompleteness.